

HealthPath Washington

Public Informational Webinar



HealthPath
Washington

September 27, 2012

Purpose: To provide a monthly informational update on the status of integrating care for individuals who are dually eligible for Medicare and Medicaid



Agenda

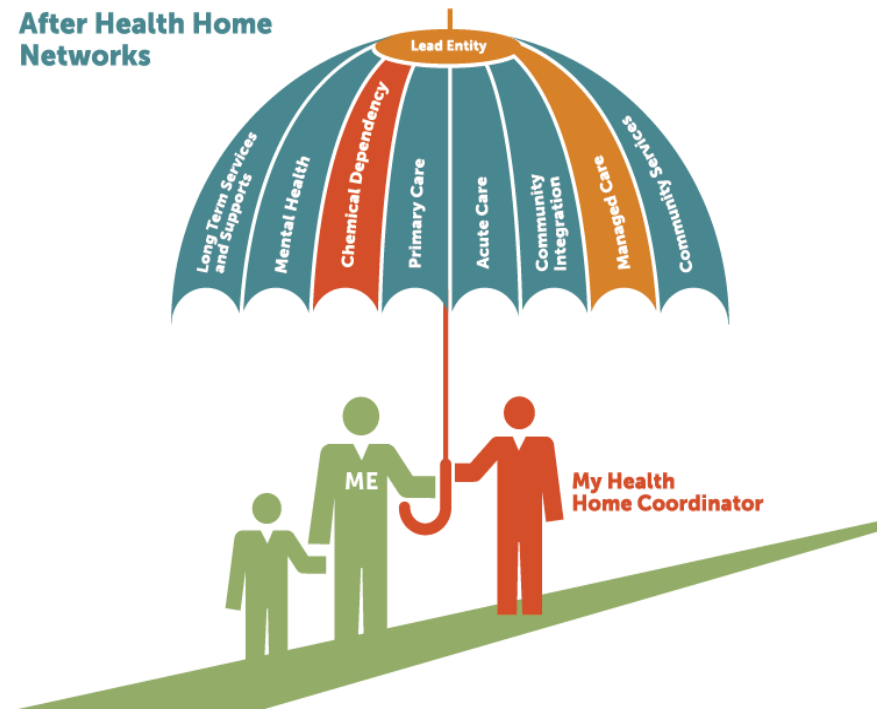
Update on status of implementation & planning:

- Strategy 1: Health Homes
- Strategy 2: Capitation through Health Plans

Strategy 1: Health Homes

HH Coordinator will partner with beneficiaries, their families, doctors and other agencies to ensure coordination across systems of care

After Health Home Networks



Strategy 1: Health Homes

- Essential requirements and updated frequently asked questions document on the health homes website
- 157 letters of interest received
- Phased implementation beginning April 2013



HealthPath
Washington

Washington State
Health Care Authority



Strategy 1: Health Homes

- Draft of proposed health home network coverage areas is out for comment to the advisory team
- Proposed areas take into consideration: integration at the local service delivery level, diversity in the types of care coordination entities needed to serve the population, financial sustainability, oversight, fidelity and administrative simplification



Strategy 1: Health Homes

- Health homes will be available to high cost/high risk populations statewide
- The state will not implement health homes using 2703 funding during the duals demonstration period in geographic areas where the financial capitation model (strategy 2) is implemented



Strategy 1: Health Homes

Next Steps:

- Finalize network coverage areas
- Network Forums beginning Oct. 16th
 - Intent is to facilitate collaborations among potential partners for health home networks
- Rate setting
- Release application
- Continue to work on State Plan Amendment and MOU with Center for Medicare & Medicaid Services

Strategy 2: Capitation through Health Plans

- Health plans responsible for all Medicare and Medicaid services: medical, mental health, chemical dependency and long term services and supports
- Beneficiaries access services through health plans
- Health plans receive a capitated per member/per month payment that includes health home services
- Health plans at full risk for costs, some payment contingent on specified outcomes
- 3-way contract with State, CMS, and health plan



Strategy 2: Capitation through Health Plans

- Working with 3 counties on terms and conditions (King, Snohomish, Whatcom)
- Delay in procurement release to early 2013
- Developing contract language by section using focus groups when needed to gather additional information



HealthPath
Washington

Washington State
Health Care Authority



Strategy 2: Capitation through Health Plans

- Working with CMS to integrate requirements across Medicaid and Medicare where possible
- Implementation of this strategy will require negotiation of a second Memorandum of Understanding between the state and CMS
- Implementation still targeted to begin January 2014



Resources Available

Links to all state design plan proposals and public comments received by CMS can be found at:

<http://www.financialalignmentproposalcomments.org/default.aspx>



HealthPath
Washington

Washington State
Health Care Authority



Additional Resources

Websites: http://www.hca.wa.gov/health_homes.html
<http://www.adsa.dshs.wa.gov/duals/>
<http://www.integratedcareresourcecenter.com/>

Kathy Pickens-Rucker: kathy.pickens-rucker@hca.wa.gov

Bea Rector: bea.rector@dshs.wa.gov



HealthPath
Washington

Washington State
Health Care Authority



Questions & Answers



HealthPath
Washington

Washington State
Health Care Authority

