

Charging Data

91 kW battery



Level 1 J1772 @ 1.5 kWh
3.5 miles of range in 60 minutes

Level 2 J1772 @ 7.5 kWh
28 miles of range in 60 minutes



Level 3 CCS1 @ 155 kWh
80% charge in 52 minutes

On the road, goal is 80% charge – the last 20% takes 2-3 times longer than the first 80%. Save the 100% for overnight charging.

Charging the High Voltage Battery

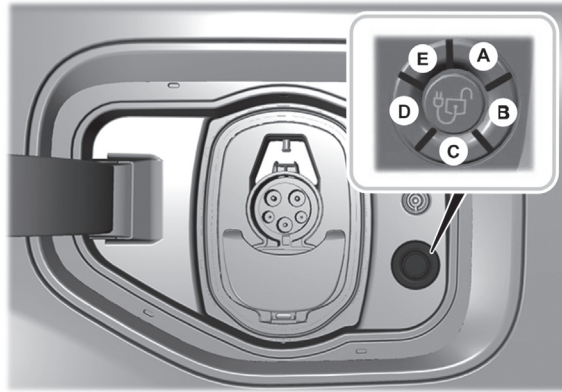
To charge the high voltage battery with the mobile power cord:

1. Unwrap the mobile power cord completely before charging.
2. Put your vehicle in park (P).
3. Plug the connector into the charger control box.
4. Plug the connector into the wall outlet.
5. Confirm that the mobile power cord indicators illuminate.
6. Press and release the center right-hand edge of the charge port door to open.
7. Plug the charge coupler into the charge port receptacle on your vehicle.

When Using A DC Charger

Do not attempt to remove the charge coupler before it is unlocked or use any kind of tool to try and remove a locked charge coupler.

1. Push the coupler unlock button on the light ring.
2. Press the latch on the charge coupler and remove it from the vehicle charge port.
3. Close the dust cap for the lower connectors.
4. Press the center right-hand edge of the charge port door to close.



Charge Port Indicators

Divided into 5 zones, the charge status indicator displays the state of charge in 20% increments:

Zone A – When zone A is pulsing, charge = 0-20%.

Zone B – When zone B starts pulsating, charge = 20-40%.

Zone C – When zone C starts pulsating, charge = 40-60%.

Zone D – When zone D starts pulsating, charge = 60-80%.

Zone E – When zone E starts pulsating, charge = 80-100%.

- When all zones illuminate, the charge is 100%.

When charging stops, the charge status indicator shows all the completed zones solidly lit blue for 30 seconds before turning off.

Colors are used as Indicators

- White is used as a courtesy light to help with plugging in and to acknowledge plugging in and unplugging.
- Blue is used when the vehicle is plugged in and charging or waiting to charge.
- Orange indicates charge faults. You can turn the light off in the vehicle settings on the touchscreen.

Ford F-150



F-150 LIGHTNING™

Emergency Contact Phone Numbers

DES Vendor Maintenance
800-542-6840 / 866-329-3471

DES Fuel/Charge Card Questions
360-664-9215

CEI (Accident) Claims
877-443-5777

Roadside Assistance
800-542-6840



Transforming lives

DSHS 22-2013 (4/24)

Normal Mode

Getting the Most Range out of Lightning

Switching One Pedal Drive On and Off

1. Access the vehicle drawer on the touchscreen.
2. Press **CONTROLS**.
3. Press **DRIVER MODES**.
4. Switch **1-Pedal Drive** on or off.

One Pedal Drive Indicators

When one pedal drive is active, the indicator displays in the instrument cluster.



One Pedal Drive Limitations

One pedal drive is unavailable when any of the following occur:

- A drive mode other than **NORMAL** or **SPORT** is selected.
- Cruise control is active.
- Stability control is turned off.
- Trailer hitch assist is active.
- Active park assist is active.
- Remote park assist is active.
- Gear lever is in an incorrect transmission position, such as park (P) while driving.

Releasing the accelerator pedal may not bring your vehicle to a complete stop on steep grades. Increased vehicle load or towing a trailer may reduce accelerator pedal ability to slow the vehicle.

Selecting a Drive Mode

1. Access the vehicle drawer on the touchscreen.
2. Press **CONTROLS**.
3. Press **DRIVER MODES**.
4. Press **Normal, Sport, Tow/Haul, or Off-Road** to select a desired drive mode.

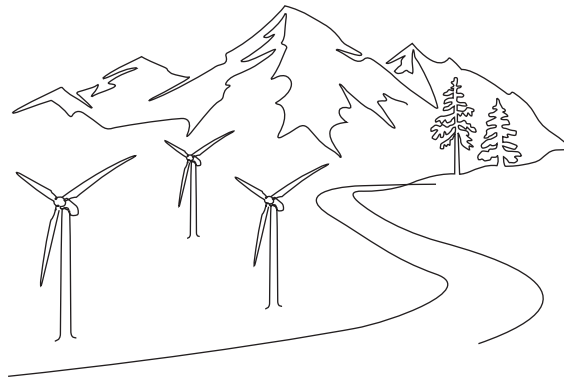
Drive Modes



NORMAL – Should be your default driving mode to achieve maximum range capabilities.

For everyday driving. This mode is a perfect balance of excitement, comfort, and convenience. All systems that are altered by drive mode control are set to the default settings.

NOTE: One pedal drive is available in this mode.



Scan the QR code for the Ford F-150 Lightning owner's manual.

What is a Frunk? It's the **FRONT** Trunk!

Opening The Frunk From Inside

NOTE: Make sure the vehicle is in park (P).

Using The Instrument Panel Button

Press the button to open the frunk.



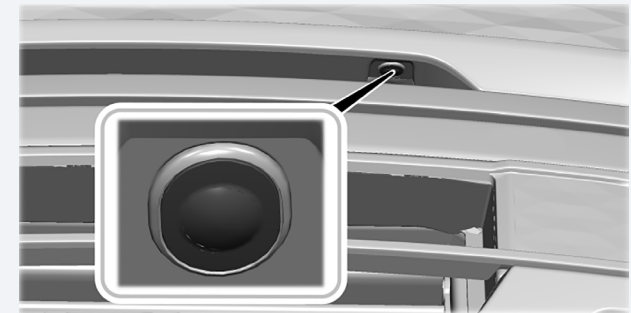
Using The Touchscreen

1. Access the vehicle drawer on the touchscreen.
2. Press **CONTROLS**.
3. Press **DRIVER MODES**.
4. Press **Normal, Sport, Tow/Haul, or Off-Road** to select a desired drive mode.



Using Frunk Control Button

Press and release the control button.



Opening The Frunk Using The Remote Control

Press the button twice within three seconds.



NOTE: Be careful when opening the frunk in a garage or other enclosed area to avoid damaging the frunk.